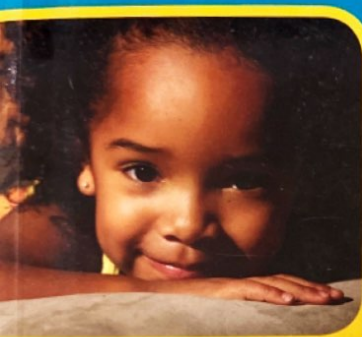


# NURSING CARE OF CHILDREN

*Principles & Practice*

FOURTH EDITION



SUSAN ROWEN JAMES  
KRISTINE ANN NELSON  
JEAN WEILER ASHWILL



ELSEVIER

<http://evolve.elsevier.com>

## UNIT I INTRODUCTION TO CHILD HEALTH NURSING

- 1 Introduction to Nursing Care of Children, 1
  - Principles of Caring for Children, 1
  - Historical Perspectives, 1
    - Societal Changes, 1
    - Hygiene and Hospitalization, 2
    - Development of Family-Centered Child Care, 2
  - Current Trends in Child Health Care, 3
    - Cost Containment, 3
    - Effects of Cost Containment, 4
  - Home Care, 6
  - Community Care, 6
    - Access to Care, 6
    - Health Care Assistance Programs, 7
  - Statistics on Infant and Child Health, 8
    - Mortality, 8
    - Morbidity, 9
    - Adolescent Births, 9
  - Ethical Perspectives in Child Health Nursing, 9
    - Ethics and Bioethics, 9
    - Ethical Dilemmas, 10
    - Ethical Principles, 10
    - Solving Ethical Dilemmas, 10
    - Ethical Concerns in Child Health Nursing, 10
  - Legal Issues, 11
    - Safeguards for Health Care, 11
    - Standards of Care, 11
    - Agency Policies, 11
    - Malpractice, 12
  - Social Issues, 14
    - Poverty, 14
    - Homelessness, 15
    - Allocation of Health Care Resources, 15
    - Care versus Cure, 15
    - Health Care Rationing, 16
    - Violence, 16
  - The Professional Nurse, 16
    - The Role of the Professional Nurse, 16
  - Advanced Roles for Pediatric Nurses, 18
    - Nurse Practitioners, 18
    - Clinical Nurse Specialists, 18
    - Clinical Nurse Leaders, 18
    - Implications of Changing Roles for Nurses, 18

- The Nursing Process in Pediatric Care, 18
  - Therapeutic Communication, 18
  - Critical Thinking, 18
  - Steps of the Nursing Process, 19
- Complementary and Alternative Medicine, 20
- Nursing Research and Evidence-Based Practice, 21

## UNIT II GROWTH AND DEVELOPMENT: THE CHILD AND THE FAMILY

- 2 Family-Centered Nursing Care, 23
  - Family-Centered Care, 23
    - Family Structure, 23
    - Types of Families, 24
    - Characteristics of Healthy Families, 25
    - High-Risk Families, 26
  - Healthy versus Dysfunctional Families, 27
    - Coping with Stress, 27
    - Coping Strategies, 27
  - Cultural Influences on Pediatric Nursing, 27
    - Implications of Cultural Diversity for Nurses, 28
      - Western Cultural Beliefs, 28
      - Cultural Influences on the Care of People from Specific Groups, 28
    - Cross-Cultural Health Beliefs, 31
    - Cultural Assessment, 32
  - Parenting, 32
    - Parenting Styles, 32
    - Parent-Child Relationship Factors, 32
  - Discipline, 33
    - Dealing with Misbehavior, 33
    - Nursing Process and the Family, 35
- 3 Communicating with Children and Families, 37
  - Components of Effective Communication, 37
    - Touch, 37
    - Physical Proximity and Environment, 37
    - Listening, 38
    - Visual Communication, 39
    - Tone of Voice, 39
    - Body Language, 39
    - Timing, 39
  - Family-Centered Communication, 40
    - Establishing Rapport, 40
    - Availability and Openness to Questions, 40

- Family Education and Empowerment, 41*
- Effective Management of Conflict, 41*
- Feedback from Children and Families, 41*
- Spirituality, 41*
- Transcultural Communication: Bridging the Gap, 42**
  - Therapeutic Relationships: Developing and Maintaining Trust, 42*
  - Nursing Care for Communicating with Children and Families, 42*
- Communicating with Children with Special Needs, 47**
  - The Child with a Visual Impairment, 48*
  - The Child with a Hearing Impairment, 48*
  - The Child Who Speaks Another Language, 48*
  - The Child with Other Communication Issues, 49*
  - The Child with a Profound Neurologic Impairment, 49*
- 4 Health Promotion for the Developing Child, 50**
  - Overview of Growth and Development, 50**
    - Definition of Terms, 50*
    - Stages of Growth and Development, 51*
    - Parameters of Growth, 51*
  - Principles of Growth and Development, 52**
    - Patterns of Growth and Development, 52*
    - Critical Periods, 52*
    - Factors Influencing Growth and Development, 52*
  - Theories of Growth and Development, 54**
    - Piaget's Theory of Cognitive Development, 54*
    - Freud's Theory of Psychosexual Development, 57*
    - Erikson's Psychosocial Theory, 57*
    - Kohlberg's Theory of Moral Development, 58*
  - Theories of Language Development, 58**
  - Genetic and Genomic Influences on Growth and Development, 59**
    - Genetics and Genomics, 59*
    - Principles of Mendelian Inheritance, 60*
    - Mendelian Inheritance Patterns, 61*
    - Chromosomal Abnormalities, 62*
    - Numerical Abnormalities, 62*
    - Multifactorial Birth Defects, 63*
    - Exposure to an Adverse Prenatal Environment, 63*
    - Genetic Counseling, 63*
  - Assessment of Growth, 64**
  - Assessment of Development, 65**
    - Denver Developmental Screening Test II (DDST-II), 65*
  - Nurse's Role in Promoting Optimal Growth and Development, 65**
    - Developmental Assessment, 66*
    - Play, 66*
  - Health Promotion, 68**
    - Immunizations, 68*
    - Nutrition and Activity, 71*
    - Physical Activity, 73*
    - Safety, 74*
- 5 Health Promotion for the Infant, 77**
  - Growth and Development of the Infant, 77**
    - Physical Growth and Maturation of Body Systems, 78*
    - Motor Development, 80*
    - Cognitive Development, 81*
    - Sensory Development, 82*
    - Language Development, 82*
    - Psychosocial Development, 83*
  - Health Promotion for the Infant and Family, 84**
    - Immunization, 84*
    - Skin Care, 84*
    - Feeding and Nutrition, 85*
    - Dental Care, 93*
    - Sleep and Rest, 95*
    - Safety, 97*
  - Concerns during Infancy, 100**
    - Jaundice, 100*
    - Circumcision, 100*
    - Patterns of Crying, 102*
    - The Infant with Colic, 102*
- 6 Health Promotion during Early Childhood, 106**
  - Growth and Development during Early Childhood, 106**
    - Physical Growth and Development, 106*
    - Motor Development, 108*
    - Cognitive and Sensory Development, 109*
    - Language Development, 112*
    - Psychosocial Development, 113*
  - Health Promotion for the Toddler or Preschooler and Family, 116**
    - Nutrition, 116*
    - Dental Care, 118*
    - Sleep and Rest, 118*
    - Discipline, 119*
    - Toddler Safety, 120*
    - Preschooler Safety, 122*
    - Selected Issues Related to the Toddler, 124*
    - Selected Issues Related to the Preschooler, 126*
- 7 Health Promotion for the School-Age Child, 130**
  - Growth and Development of the School-Age Child, 130**
    - Physical Growth and Development, 130*
    - Motor Development, 132*
    - Cognitive Development, 133*
    - Sensory Development, 134*
    - Language Development, 134*
    - Psychosocial Development, 134*
    - Spiritual and Moral Development, 135*



- Health Promotion for the School-Age Child and Family, 136  
*Nutrition during Middle Childhood, 136*  
*Dental Care, 136*  
*Sleep and Rest, 137*  
*Discipline, 137*  
*Safety, 139*  
*Selected Issues Related to the School-Age Child, 140*
- 8 Health Promotion for the Adolescent, 149  
 Adolescent Growth and Development, 149  
*Physical Growth and Development, 149*  
*Psychosexual Development, Hormonal Changes, and Sexual Maturation, 150*  
*Motor Development, 153*  
*Cognitive Development, 153*  
*Sensory Development, 153*  
*Language Development, 154*  
*Psychosocial Development, 154*  
*Moral and Spiritual Development, 157*  
 Health Promotion for the Adolescent and Family, 157  
*Nutrition during Adolescence, 158*  
*Hygiene, 159*  
*Dental Care, 159*  
*Sleep and Rest, 159*  
*Exercise and Activity, 159*  
*Safety, 161*  
*Selected Issues Related to the Adolescent, 163*
- UNIT III SPECIAL CONSIDERATIONS IN CARING FOR CHILDREN**
- 9 Physical Assessment of Children, 168  
 General Approaches to Physical Assessment, 168  
*Infants from Birth to 6 Months, 168*  
*Infants from 6 to 12 Months, 169*  
*Toddlers, 169*  
*Preschoolers, 169*  
*School-Age Children, 169*  
*Adolescents, 169*  
 Techniques for Physical Examination, 169  
*Inspection, 169*  
*Palpation, 170*  
*Percussion, 170*  
*Auscultation, 170*  
*Smell, 170*  
 Sequence of Physical Examination, 170  
*General Appearance, 170*  
*History Taking, 171*  
*Recording Data, 171*  
*Vital Signs, 171*  
*Anthropometric Measurement, 173*  
*Use of Growth Charts, 174*
- Skin, Hair, And Nails, 175*  
*Lymph Nodes, 176*  
*Head, Neck, and Face, 176*  
*Nose, Mouth, and Throat, 177*  
*Eyes, 179*  
*Ears, 182*  
*Thorax and Lungs, 183*  
*Heart, 186*  
*Peripheral Vascular System, 190*  
*Breast, 190*  
*Abdomen, 190*  
*Male Genitalia, 192*  
*Female Genitalia, 193*  
*Musculoskeletal System, 193*  
*Neurologic System, 195*  
 Conclusion and Documentation, 201
- 10 Emergency Care of the Child, 202  
 General Guidelines for Emergency Nursing Care, 202  
 Growth and Development Issues in Emergency Care, 204  
*The Infant, 204*  
*The Toddler, 205*  
*The Preschooler, 205*  
*The School-Age Child, 205*  
*The Adolescent, 206*  
 The Family of a Child in Emergency Care, 206  
 Emergency Assessment of Infants and Children, 206  
*Primary Assessment, 206*  
*Secondary Assessment, 209*  
 Cardiopulmonary Resuscitation of the Child, 211  
*Airway and Breathing, 211*  
*Circulation, 211*  
 The Child in Shock, 212  
*Etiology, 213*  
*Manifestations, 213*  
*Diagnostic Evaluation, 214*  
*Therapeutic Management, 214*  
*Nursing Care of the Child in Shock, 215*  
 Pediatric Trauma, 216  
*Mechanism of Injury, 216*  
*Multiple Trauma, 217*  
*Nursing Considerations, 219*  
 Ingestions and Poisonings, 220  
*Incidence, 220*  
*Manifestations, 220*  
*Diagnostic Evaluation, 220*  
*Therapeutic Management, 221*  
*Nursing Care of the Child Who Has Ingested a Toxic Substance, 223*  
 Environmental Emergencies, 224  
*Animal, Human, Snake, and Spider Bites, 224*  
*Submersion Injuries (Near Drowning), 225*

- Nursing Care of the Child with a Submersion Injury*, 226
- Heat-Related Illnesses*, 228
- Dental Emergencies**, 229
- Incidence and Etiology*, 229
- Therapeutic Management*, 229
- Nursing Considerations*, 229
- 11 The Ill Child in the Hospital and Other Care Settings**, 231
- Settings of Care**, 231
- The Hospital*, 231
- School-Based Clinics*, 233
- Community Clinics*, 234
- Home Care*, 234
- Stressors Associated with Illness and Hospitalization**, 234
- The Infant and Toddler*, 235
- The Preschooler*, 236
- The School-Age Child*, 237
- The Adolescent*, 238
- Fear of the Unknown*, 238
- Regression*, 238
- Factors Affecting a Child's Response to Illness and Hospitalization**, 238
- Age and Cognitive Development*, 239
- Parental Response*, 239
- Preparing the Child and Family*, 241
- Coping Skills of the Child and Family*, 241
- Psychological Benefits of Hospitalization*, 241
- Play for the Ill Child**, 241
- Playrooms*, 241
- Therapeutic Play*, 242
- Emotional Outlet Play*, 242
- Teaching through Play*, 242
- Enhancing Cooperation through Play*, 242
- Unstructured Play*, 242
- Evaluation of Play*, 242
- Admitting the Child to a Hospital Setting**, 243
- Taking the History*, 243
- Physical Examination*, 244
- Nursing Care Plan: The Child and Family in a Hospital Setting*, 244
- The Ill Child's Family**, 246
- Parents*, 246
- Siblings*, 247
- 12 The Child with a Chronic Condition or Terminal Illness**, 250
- Chronic Illness Defined**, 250
- The Family of the Child with Special Health Care Needs**, 250
- Family Dynamics and Impact on the Family*, 250
- Coping and the Grieving Process*, 252
- The Child with Special Health Care Needs**, 253
- Coping and Growth and Development Concerns*, 253
- Coping and Parental Responses to Developmental Issues*, 253
- The Child with a Chronic Illness**, 254
- Ongoing Care*, 255
- Caring for Parents*, 256
- Caring for Siblings*, 257
- Nursing Care Plan: The Child with a Chronic Condition in the Community Setting*, 258
- The Terminally Ill or Dying Child**, 260
- Coping and the Child's Concept of Death*, 260
- Coping and Responses to Death and Dying*, 261
- Caring for the Dying Child*, 262
- Nursing Care Plan: The Terminally Ill or Dying Child*, 266
- 13 Principles and Procedures for Nursing Care of Children**, 269
- Preparing Children for Procedures**, 269
- Explaining Procedures*, 269
- Consent for Procedures*, 270
- Holding and Transporting Infants and Children**, 271
- Safety Issues in the Hospital Setting**, 271
- Infection Control**, 273
- Hand Hygiene*, 273
- Standard Precautions*, 273
- Implementing Precautions*, 273
- Family Teaching*, 273
- Bathing Infants and Children**, 273
- Special Considerations*, 274
- Documentation*, 275
- Parent Teaching*, 275
- Oral Hygiene**, 275
- Feeding**, 275
- Special Considerations*, 276
- Documentation*, 276
- Parent Teaching*, 276
- Vital Signs**, 276
- Measuring Temperature*, 276
- Measuring Pulse*, 277
- Evaluating Respirations*, 277
- Measuring Blood Pressure*, 277
- Documentation of Vital Sign Measurement*, 278
- Preparing the Child and Family*, 279
- Parent Teaching*, 279
- Special Considerations: Cardiorespiratory Monitors*, 279
- Fever-Reducing Measures**, 279
- Description of Fever*, 279
- Medications and Environmental Management*, 279
- Specimen Collection**, 280
- Urine Specimens*, 280
- Stool Specimens*, 283

- Blood Specimens*, 283  
*Sputum Specimens*, 285  
*Throat and Nasopharyngeal Specimens*, 285  
*Cerebrospinal Fluid Specimens*, 285  
*Bone Marrow Aspiration*, 285
- Gastrointestinal Tubes and Enteral Feedings**, 286  
*Tube Route and Placement*, 286  
*Tube Selection*, 286  
*Safety Issues Related to Tube Placement*, 288  
*Contraindications to Tube Placement*, 288  
*Enteral Feedings*, 288  
*Gastrostomy Tubes and Buttons*, 288
- Enemas**, 290  
*Enema Administration*, 290  
*Solutions and Volumes*, 290
- Ostomies**, 290
- Oxygen Therapy**, 290  
*Oxygen Administration*, 290  
*Documentation*, 291  
*Parent Teaching*, 291
- Assessing Oxygenation**, 291
- Chest Physiotherapy**, 292
- Tracheostomy Care**, 293  
*Suctioning*, 293  
*Stoma Care*, 294
- Surgical Procedures**, 295  
*Preparation for Surgery*, 295  
*Preoperative Medication and Anesthesia Induction*, 295  
*Postanesthesia Care*, 296  
*Postoperative Care*, 296
- 14 Medication Administration and Safety for Infants and Children**, 298
- Pharmacokinetics in Children**, 299  
*Absorption*, 299  
*Distribution*, 300  
*Metabolism*, 300  
*Excretion*, 300  
*Concentration*, 300
- Psychological and Developmental Factors**, 301  
*Infants*, 301  
*Toddlers and Preschoolers*, 301  
*School-Age Children*, 301  
*Adolescents*, 301
- Calculating Dosages**, 302
- Medication Administration Procedures**, 302  
*Medication Reconciliation*, 302  
*Administering Oral Medications*, 303  
*Administering Injections*, 304  
*Rectal Administration*, 307  
*Vaginal Administration*, 308  
*Ophthalmic Administration*, 308  
*Otic Administration*, 308  
*Nasal Administration*, 308  
*Topical Administration*, 309  
*Inhalation Therapy*, 309
- Intravenous Therapy**, 310  
*Intravenous Catheter Insertion*, 310  
*Intravenous Catheter Monitoring*, 312  
*Intravenous Infusion Monitoring*, 312  
*Infusion Rates and Methods*, 313  
*Administering Intravenous Medications*, 313  
*Venous Access Devices*, 314
- Administration of Blood Products**, 315
- Child and Family Education**, 315
- 15 Pain Management for Children**, 317  
*Definitions and Theories of Pain*, 317  
*Gate Control Theory*, 318  
*Acute and Chronic Pain*, 318  
*Research on Pain in Children*, 318  
*Obstacles to Pain Management in Children*, 319  
*Assessment of Pain in Children*, 319  
*Assessment According to Developmental Level*, 320  
*Assessment Tools*, 322
- Nonpharmacologic and Pharmacologic Pain Interventions**, 323  
*Nonpharmacologic Interventions*, 323  
*Pharmacologic Interventions*, 326

## UNIT IV CARING FOR CHILDREN WITH HEALTH PROBLEMS

- 16 The Child with a Fluid and Electrolyte Alteration**, 336  
*Review of Fluid and Electrolyte Imbalances in Children*, 336  
*Alterations in Acid-Base Balance in Children*, 338  
*Dehydration*, 341  
*Etiology and Incidence*, 342  
*Manifestations*, 343  
*Therapeutic Management*, 343  
*Nursing Care of the Child with Dehydration*, 345
- Diarrhea**, 347  
*Etiology and Incidence*, 347  
*Manifestations*, 347  
*Diagnostic Evaluation*, 348  
*Therapeutic Management*, 348  
*Prognosis*, 349  
*Nursing Care of the Child with Diarrhea*, 349
- Vomiting**, 351  
*Etiology*, 351  
*Manifestations*, 351  
*Diagnostic Evaluation*, 351  
*Therapeutic Management*, 351  
*Nursing Care of the Vomiting Child*, 351
- 17 The Child with an Infectious Disease**, 353  
*Review of Disease Transmission*, 353  
*Chain of Infection*, 353  
*Transmission of Pathogens*, 354  
*Epidemiologic Investigations*, 354



- Infection and Host Defenses, 354
- Immunity, 354
- Viral Exanthems, 355
- Nursing Considerations for the Child with a Viral Exanthem Infection, 355*
- Rubeola (Measles), 355*
- Nursing Care Plan: The Child with an Infection in the Community Setting, 357*
- Rubella (German Measles, 3-Day Measles), 361*
- Erythema Infectiosum (Fifth Disease, Parvovirus B19), 362*
- Roseola Infantum (Exanthem Subitum), 362*
- Enterovirus (Nonpolio) Infections (Coxsackieviruses, Group A and Group B), Echoviruses, and Enteroviruses, 363*
- Varicella-Zoster Infections (Chickenpox, Shingles), 364*
- Other Viral Infections, 366
- Mumps, 366*
- Cytomegalovirus (CMV), 367*
- Epstein-Barr Virus (Infectious Mononucleosis), 367*
- Rabies, 368*
- Bacterial Infections, 369
- Pertussis (Whooping Cough), 369*
- Scarlet Fever, 370*
- Methicillin-Resistant Staphylococcus aureus (MRSA), 371*
- Clostridium difficile, 372*
- Neonatal Sepsis, 372*
- Rare Viral and Bacterial Infections, 374*
- Fungal Infections, 374
- Rickettsial Infections, 375
- Rocky Mountain Spotted Fever, 375*
- Borrelia* Infections, 375
- Relapsing Fever, 375*
- Lyme Disease, 376*
- Helminths, 377
- Therapeutic Management, 377*
- Nursing Considerations, 377*
- Sexually Transmissible Infections, 378
- Chlamydial Infection, 378*
- Gonorrhea, 379*
- Herpes Simplex Virus, 379*
- Human Papillomavirus, 379*
- Bacterial Vaginosis, 380*
- Syphilis, 380*
- Trichomoniasis, 380*
- 18 The Child with an Immunologic Alteration, 384
- Review of the Immune System, 384
- Nonspecific Immune Functions, 384*
- Specific Immune Functions, 385*
- Development of Immunity, 387*
- Common Laboratory and Diagnostic Tests of Immune Function, 388
- Immundeficiencies, 388*
- Allergy, 388*
- Human Immunodeficiency Virus Infection, 390
- Etiology, 390*
- Incidence, 390*
- Manifestations, 390*
- Diagnostic Evaluation, 391*
- Therapeutic Management, 392*
- Nursing Care Plan: The Child with HIV Infection in the Community, 394
- Nursing Care Plan: The Adolescent with HIV Infection, 398
- Corticosteroid Therapy, 399
- Incidence, 399*
- Pathophysiology, 399*
- Manifestations, 399*
- Diagnostic Evaluation, 400*
- Therapeutic Management, 400*
- Nursing Care of the Child Receiving Corticosteroids, 400*
- Immune Complex and Autoimmune Disorders, 401
- Immune Complex Disorders, 401*
- Autoimmune Disorders, 401*
- Systemic Lupus Erythematosus, 401
- Etiology, 401*
- Incidence, 401*
- Manifestations, 402*
- Diagnostic Evaluation, 402*
- Therapeutic Management, 402*
- Nursing Care of the Child with Systemic Lupus Erythematosus, 402*
- Allergic Reactions, 403
- Anaphylaxis, 403
- Etiology, 403*
- Incidence, 403*
- Manifestations, 404*
- Diagnostic Evaluation, 404*
- Therapeutic Management, 404*
- Nursing Care of the Child with Anaphylaxis, 405*
- 19 The Child with a Gastrointestinal Alteration, 407
- Review of the Gastrointestinal System, 407
- Upper Gastrointestinal System, 407*
- Lower Gastrointestinal System, 408*
- Prenatal Development, 412*
- Disorders of Prenatal Development, 412
- Cleft Lip and Palate, 412*
- Esophageal Atresia with Tracheoesophageal Fistula, 414*
- Nursing Care Plan: The Child with a Cleft Lip or Palate, 415

*Nursing Care of the Infant with Tracheoesophageal Fistula, 417*

**Upper Gastrointestinal Hernias, 419**

**Other Developmental Disorders, 419**

**Motility Disorders, 419**

**Gastroesophageal Reflux Disease, 419**

*Nursing Care of the Infant with Gastroesophageal Reflux Disease (GERD), 423*

**Constipation and Encopresis, 424**

*Nursing Care of the Child with Constipation and Encopresis, 425*

**Recurrent Abdominal Pain/Irritable Bowel Syndrome, 426**

**Inflammatory and Infectious Disorders, 427**

**Ulcers, 427**

**Infectious Gastroenteritis, 428**

*Nursing Care of the Child with Infectious Gastroenteritis, 430*

**Appendicitis, 431**

*Nursing Care of the Child with Appendicitis, 432*

**Inflammatory Bowel Disease, 433**

*Nursing Care of the Child with Inflammatory Bowel Disease, 434*

**Obstructive Disorders, 436**

**Hypertrophic Pyloric Stenosis, 436**

*Nursing Care of the Child with Hypertrophic Pyloric Stenosis, 437*

**Intussusception, 438**

*Nursing Care of the Child with Intussusception, 439*

**Volvulus, 440**

**Hirschsprung Disease, 440**

*Nursing Care of the Child with Hirschsprung Disease, 441*

**Malabsorption Disorders, 442**

**Lactose Intolerance, 442**

*Nursing Care of the Child with Lactose Intolerance, 443*

**Celiac Disease, 443**

*Nursing Care of the Child with Celiac Disease, 445*

**Hepatic Disorders, 446**

**Viral Hepatitis, 446**

*Nursing Care of the Child with Viral Hepatitis, 448*

**Biliary Atresia, 449**

**Cirrhosis, 451**

**20 The Child with a Genitourinary Alteration, 454**

**Review of the Genitourinary System, 454**

**Structure, 454**

**Function, 455**

**Enuresis, 458**

**Etiology, 458**

**Incidence, 458**

**Manifestations, 459**

**Diagnostic Evaluation, 459**

**Therapeutic Management, 459**

*Nursing Care of the Child with Enuresis, 459*

**Urinary Tract Infections, 460**

**Etiology, 460**

**Incidence, 460**

**Manifestations, 461**

**Diagnostic Evaluation, 461**

**Therapeutic Management, 462**

*Nursing Care of the Child with a Urinary Tract Infection, 462*

**Cryptorchidism, 464**

**Incidence, 464**

**Manifestations, 464**

**Diagnostic Evaluation, 464**

**Therapeutic Management, 464**

*Nursing Care of the Child with Cryptorchidism, 464*

**Hypospadias and Epispadias, 465**

**Etiology and Incidence, 465**

**Manifestations and Diagnostic**

**Evaluation, 465**

**Therapeutic Management, 465**

*Nursing Care of the Child with Hypospadias, 466*

**Miscellaneous Disorders and Anomalies of the Genitourinary Tract, 466**

**Acute Poststreptococcal**

**Glomerulonephritis, 466**

**Etiology and Incidence, 466**

**Manifestations, 466**

**Diagnostic Evaluation, 466**

**Therapeutic Management, 467**

*Nursing Care of the Child with Acute Poststreptococcal Glomerulonephritis, 467*

**Nephrotic Syndrome, 469**

**Etiology, 469**

**Incidence, 470**

**Manifestations, 470**

**Diagnostic Evaluation, 470**

**Therapeutic Management, 470**

*Nursing Care Plan: The Child with Nephrotic Syndrome, 472*

**Acute Renal Failure, 474**

**Etiology and Incidence, 474**

**Manifestations, 474**

**Diagnostic Evaluation, 474**

**Therapeutic Management, 475**

**Nursing Considerations, 475**

**Chronic Renal Failure and End-Stage Renal**

**Disease, 475**

**Etiology, 477**

**Incidence, 477**

**Pathophysiology, 477**



- Manifestations, 477*  
*Diagnostic Evaluation, 477*  
*Therapeutic Management, 477*  
*Nursing Care of the Child with Chronic Renal Failure and End-Stage Renal Disease, 478*
- 21 The Child with a Respiratory Alteration, 480  
*Review of the Respiratory System, 480*  
*The Upper Airway, 480*  
*The Lower Airway, 481*  
*Prenatal Respiratory Development, 481*  
*Postnatal Respiratory Changes, 482*  
*Gas Exchange and Transport, 482*  
*Diagnostic Tests, 483*  
*Blood Gas Analysis, 484*  
*Pulmonary Function Tests, 484*  
*Pulse Oximetry, 484*  
*Transcutaneous Monitoring, 484*  
*End-Tidal Carbon Dioxide Monitoring, 485*  
*Respiratory Illness in Children, 485*  
*Allergic Rhinitis, 485*  
*Etiology and Incidence, 485*  
*Manifestations, 485*  
*Diagnostic Evaluation, 486*  
*Therapeutic Management, 486*  
*Nursing Considerations, 486*  
*Sinusitis, 487*  
*Etiology and Incidence, 487*  
*Manifestations, 487*  
*Diagnostic Evaluation, 487*  
*Therapeutic Management, 487*  
*Nursing Considerations, 487*  
*Otitis Media, 488*  
*Etiology, 488*  
*Incidence, 488*  
*Manifestations, 488*  
*Diagnostic Evaluation, 488*  
*Therapeutic Management, 488*  
*Nursing Care of the Child with Otitis Media, 489*  
*Pharyngitis and Tonsillitis, 491*  
*Etiology, 491*  
*Incidence, 491*  
*Manifestations, 491*  
*Diagnostic Evaluation, 492*  
*Therapeutic Management, 492*  
*Nursing Considerations, 493*  
*Nursing Care of the Child Undergoing a Tonsillectomy, 493*  
*Laryngomalacia (Congenital Laryngeal Stridor), 495*  
*Manifestations, 495*  
*Therapeutic Management, 495*  
*Nursing Considerations, 495*  
*Croup, 495*  
*Etiology and Incidence, 495*  
*Manifestations, 495*  
*Diagnostic Evaluation, 495*  
*Therapeutic Management, 495*  
*Nursing Care of the Child with Croup, 496*  
*Epiglottitis (Supraglottitis), 498*  
*Etiology and Incidence, 498*  
*Manifestations, 498*  
*Diagnostic Evaluation, 498*  
*Therapeutic Management, 498*  
*Nursing Considerations, 499*  
*Bronchitis, 500*  
*Etiology and Incidence, 500*  
*Manifestations and Diagnostic Evaluation, 500*  
*Therapeutic Management, 500*  
*Nursing Considerations, 500*  
*Bronchiolitis, 500*  
*Etiology and Incidence, 500*  
*Manifestations, 500*  
*Diagnostic Evaluation, 501*  
*Therapeutic Management, 501*  
*Nursing Care of the Child with Bronchiolitis, 502*  
*Pneumonia, 503*  
*Nursing Care of the Child with Pneumonia, 503*  
*Foreign Body Aspiration, 504*  
*Etiology and Incidence, 505*  
*Pathophysiology, 505*  
*Manifestations, 505*  
*Diagnostic Evaluation, 505*  
*Therapeutic Management, 505*  
*Nursing Considerations, 505*  
*Pulmonary Noninfectious Irritation, 505*  
*Acute Respiratory Distress Syndrome, 505*  
*Passive Smoking, 506*  
*Smoke Inhalation, 507*  
*Respiratory Distress Syndrome, 507*  
*Incidence, 507*  
*Pathophysiology, 507*  
*Manifestations, 507*  
*Therapeutic Management, 507*  
*Nursing Care of the Child with RDS, 508*  
*Apnea, 508*  
*Manifestations, 508*  
*Diagnostic Evaluation, 509*  
*Nursing Care of the Child with Apnea, 509*  
*Sudden Infant Death Syndrome, 510*  
*Etiology and Incidence, 510*  
*Manifestations, 511*  
*Diagnostic Evaluation, 511*  
*Nursing Care of the Family of the Infant Who Has Died of Sudden Infant Death Syndrome, 511*  
*Asthma, 512*  
*Etiology, 512*  
*Incidence, 512*

- Manifestations, 512*  
*Diagnostic Evaluation, 513*  
*Therapeutic Management, 513*  
Nursing Care Plan: The Child Hospitalized with  
Asthma, 517
- Bronchopulmonary Dysplasia, 520**  
*Etiology, 520*  
*Incidence, 520*  
*Manifestations, 520*  
*Diagnostic Evaluation, 520*  
*Therapeutic Management, 520*  
*Nursing Considerations, 521*
- Cystic Fibrosis, 521**  
*Etiology, 522*  
*Incidence, 522*  
*Manifestations, 522*  
*Diagnostic Evaluation, 524*  
*Therapeutic Management, 524*  
Nursing Care of the Child with Cystic  
Fibrosis, 525
- Tuberculosis, 526**  
*Etiology, 526*  
*Incidence, 527*  
*Manifestations, 527*  
*Diagnostic Evaluation, 527*  
*Therapeutic Management and Nursing  
Considerations, 527*
- 22 The Child with a Cardiovascular Alteration, 531  
Review of the Heart and Circulation, 531  
*Normal Cardiac Anatomy and  
Physiology, 531*  
*Fetal Circulation, 532*  
*Transitional and Neonatal Circulation, 533*
- Congenital Heart Disease, 535**  
*Classification of Congenital Heart  
Disease, 535*
- Physiologic Consequences of Congenital Heart  
Disease in Children, 535**  
*Heart Failure, 535*
- Nursing Care Plan: The Child with Heart  
Failure, 538  
*Pulmonary Hypertension, 541*  
*Cyanosis, 541*  
Nursing Care of the Child with Cyanosis, 542
- Assessment of the Child with a Cardiovascular  
Alteration, 543**
- Cardiovascular Diagnosis, 544**  
*Cardiac Catheterization, 546*
- The Child Undergoing Cardiac  
Surgery, 547**  
*Preoperative Preparation, 547*  
*Postoperative Management, 547*
- Acquired Heart Disease, 557**  
*Infective Endocarditis, 557*  
Nursing Care of the Child with Infective  
Endocarditis, 558
- Arrhythmias, 559**  
*Etiology, 559*  
*Diagnostic Evaluation, 560*  
*Therapeutic Management, 560*  
Nursing Care of the Child with an  
Arrhythmia, 561
- Rheumatic Fever, 562**  
*Etiology, 562*  
*Incidence, 562*  
*Manifestations, 562*  
*Diagnostic Evaluation, 563*  
*Therapeutic Management, 563*  
Nursing Care of the Child with Rheumatic  
Fever, 563
- Kawasaki Disease, 564**  
*Etiology, 564*  
*Incidence, 564*  
*Manifestations, 564*  
*Diagnostic Evaluation, 564*  
*Therapeutic Management, 565*  
Nursing Care of the Child with Kawasaki  
Disease, 565
- Hypertension, 565**  
*Etiology, 566*  
*Incidence, 566*  
*Manifestations, 566*  
*Diagnostic Evaluation, 566*  
*Therapeutic Management, 566*  
Nursing Care of the Child with  
Hypertension, 567
- Cardiomyopathies, 568**
- High Cholesterol Levels in Children and  
Adolescents, 568**  
*Assessment of Children at Risk, 568*  
*Therapeutic Management, 569*  
*Nursing Considerations, 569*
- 23 The Child with a Hematologic Alteration, 571  
Review of the Hematologic System, 571
- Iron Deficiency Anemia, 573**  
*Etiology and Incidence, 573*  
*Manifestations, 573*  
*Diagnostic Evaluation, 573*  
*Therapeutic Management, 573*
- Sickle Cell Disease, 574**  
Nursing Care Plan: The Child with Iron  
Deficiency Anemia, 575  
*Etiology, 575*  
*Incidence, 575*  
*Manifestations, 575*  
*Diagnostic Evaluation, 577*  
*Therapeutic Management, 578*  
Nursing Care Plan: The Child with Sickle Cell  
Disease, 579
- Thalassemia, 580**  
*Etiology and Incidence, 580*  
*Manifestations, 580*

- Diagnostic Evaluation*, 581  
*Therapeutic Management*, 581  
*Nursing Care of the Child with Beta-Thalassemia*, 582
- Hemophilia**, 583  
*Etiology and Incidence*, 583  
*Manifestations*, 583  
*Diagnostic Evaluation*, 583  
*Therapeutic Management*, 583  
*Nursing Care Plan: The Child with Hemophilia*, 584
- von Willebrand's Disease**, 585  
*Etiology*, 585  
*Pathophysiology*, 585  
*Manifestations*, 586  
*Diagnostic Evaluation*, 586  
*Therapeutic Management*, 586  
*Nursing Care of the Child with von Willebrand's Disease*, 586
- Immune Thrombocytopenic Purpura**, 587  
*Etiology and Incidence*, 587  
*Pathophysiology*, 587  
*Manifestations*, 587  
*Diagnostic Evaluation*, 587  
*Therapeutic Management*, 587  
*Nursing Care of the Child with Immune Thrombocytopenic Purpura*, 588
- Disseminated Intra-vascular**  
*Coagulation*, 589  
*Etiology*, 589  
*Manifestations*, 589  
*Diagnostic Evaluation*, 589  
*Therapeutic Management*, 589  
*Nursing Considerations*, 590
- Aplastic Anemia**, 590  
*Etiology and Incidence*, 590  
*Manifestations*, 590  
*Diagnostic Evaluation*, 590  
*Therapeutic Management*, 590  
*Nursing Care of the Child with Aplastic Anemia*, 590
- ABO Incompatibility and Hemolytic Disease of the Newborn**, 591  
*Incidence*, 591  
*Manifestations*, 591  
*Diagnostic Evaluation*, 592  
*Therapeutic Management*, 592  
*Nursing Considerations*, 592
- Hyperbilirubinemia**, 592  
*Etiology*, 593  
*Incidence*, 593  
*Manifestations*, 593  
*Diagnostic Evaluation*, 593  
*Therapeutic Management*, 594  
*Nursing Care of the Child with Hyperbilirubinemia*, 594
- 24 The Child with Cancer**, 596  
*Review of Cancer*, 596  
**The Child with Cancer**, 599  
*Incidence*, 599  
*Childhood Cancer and Its Treatment*, 599  
*Therapeutic Management*, 599
- Leukemia**, 605  
*Etiology*, 605  
*Incidence*, 605  
*Manifestations*, 605  
*Diagnostic Evaluation*, 605  
*Therapeutic Management*, 606  
*Nursing Care Plan: The Child with Leukemia*, 606
- Brain Tumors**, 611  
*Etiology*, 611  
*Incidence*, 611  
*Manifestations*, 611  
*Diagnostic Evaluation*, 612  
*Therapeutic Management*, 613  
*Nursing Care of the Child with a Brain Tumor*, 613
- Malignant Lymphomas**, 614  
*Non-Hodgkin Lymphoma*, 614  
*Nursing Care of the Child with Non-Hodgkin Lymphoma*, 615  
*Hodgkin Disease*, 616
- Neuroblastoma**, 617  
*Etiology*, 617  
*Incidence*, 617  
*Pathophysiology*, 617  
*Manifestations*, 617  
*Diagnostic Evaluation*, 617  
*Therapeutic Management*, 617  
*Nursing Care of the Child with Neuroblastoma*, 618
- Osteosarcoma**, 618  
*Etiology*, 618  
*Incidence*, 618  
*Pathophysiology*, 618  
*Manifestations*, 619  
*Diagnostic Evaluation*, 619  
*Therapeutic Management*, 619  
*Nursing Care of the Child with Osteosarcoma*, 619
- Ewing Sarcoma**, 620  
*Etiology*, 620  
*Incidence*, 620  
*Pathophysiology*, 620  
*Manifestations*, 620  
*Diagnostic Evaluation*, 620  
*Therapeutic Management*, 620  
*Nursing Considerations*, 620
- Rhabdomyosarcoma**, 620  
*Etiology*, 620  
*Incidence*, 620  
*Pathophysiology*, 620



- Manifestations, 621
- Diagnostic Evaluation, 621
- Therapeutic Management, 621
- Nursing Considerations, 621
- Wilms Tumor, 621
  - Etiology, 621
  - Incidence, 621
  - Pathophysiology, 621
  - Manifestations, 621
  - Diagnostic Evaluation, 621
  - Therapeutic Management, 622
  - Nursing Care of the Child with Wilms Tumor, 622
- Retinoblastoma, 622
  - Etiology, 622
  - Incidence, 622
  - Pathophysiology, 623
  - Manifestations, 623
  - Diagnostic Evaluation, 623
  - Therapeutic Management, 623
  - Nursing Care of the Child with Retinoblastoma, 623
- Rare Tumors of Childhood, 624
- 25 The Child with Major Alterations in Tissue Integrity, 625
  - Review of the Integumentary System, 625
  - Common Variations in the Skin of Newborn Infants, 627
  - Common Birthmarks, 627
    - Etiology, 627
    - Incidence, 627
    - Manifestations, 627
    - Diagnostic Evaluation, 627
    - Therapeutic Management, 627
    - Nursing Considerations, 627
  - Skin Inflammation, 628
  - Seborrheic Dermatitis, 628
  - Contact Dermatitis, 629
    - Etiology, 629
    - Incidence, 629
    - Manifestations, 629
    - Diagnostic Evaluation, 629
    - Therapeutic Management, 629
    - Nursing Care of the Child with Contact Dermatitis, 629
  - Atopic Dermatitis, 630
    - Etiology, 630
    - Incidence, 630
    - Manifestations, 631
    - Diagnostic Evaluation, 631
    - Therapeutic Management, 631
    - Nursing Care of the Child with Atopic Dermatitis, 632
  - Skin Infections, 633
    - Impetigo, 633
      - Etiology, 633
      - Incidence, 633
      - Manifestations, 634
      - Diagnostic Evaluation, 634
      - Therapeutic Management, 634
      - Nursing Care of the Child with Impetigo, 634
    - Cellulitis, 635
      - Etiology and Incidence, 635
      - Pathophysiology, 635
      - Manifestations, 635
      - Diagnostic Evaluation, 635
      - Therapeutic Management, 635
      - Nursing Care of the Child with Cellulitis, 635
    - Candidiasis, 635
      - Etiology, 635
      - Incidence, 635
      - Manifestations, 636
      - Diagnostic Evaluation, 636
      - Therapeutic Management, 636
      - Nursing Care of the Child with Candidiasis, 636
    - Tinea Infection, 637
      - Etiology, 637
      - Incidence, 637
      - Manifestations, 637
      - Diagnostic Evaluation, 638
      - Therapeutic Management, 638
      - Nursing Care of the Child with Tinea Infection, 638
    - Herpes Simplex Virus Infection, 639
      - Etiology, 639
      - Incidence, 639
      - Manifestations, 639
      - Diagnostic Evaluation, 640
      - Therapeutic Management, 640
      - Nursing Care of the Child with a Herpes Simplex Infection, 640
  - Skin Infestations, 641
    - Lice Infestation, 641
      - Etiology, 641
      - Incidence, 641
      - Manifestations, 641
      - Diagnostic Evaluation, 642
      - Therapeutic Management, 642
      - Nursing Care of the Child with Pediculosis, 642
    - Mite Infestation (Scabies), 643
      - Etiology, 644
      - Incidence, 644
      - Pathophysiology, 644
      - Manifestations, 644
      - Diagnostic Evaluation, 644
      - Therapeutic Management, 644
      - Nursing Considerations, 644
  - Acne Vulgaris, 644
    - Etiology, 644
    - Incidence, 644

- Manifestations and Diagnostic Evaluation, 645*  
*Therapeutic Management, 645*  
*Nursing Care of the Child with Acne Vulgaris, 645*
- Miscellaneous Skin Disorders, 646
- Insect Bites or Stings, 648
- Burn Injuries, 649  
*Etiology, 649*  
*Incidence, 650*  
*Pathophysiology, 650*  
*Manifestations, 651*  
*Therapeutic Management, 651*
- Conditions Associated with Major Burn Injuries, 655
- Nursing Care Plan: The Child with a Minor Partial-Thickness Burn, 656
- Conditions Associated with Electrical Injury, 657  
*Cardiac Arrest or Arrhythmia, 659*  
*Tissue Damage, 659*  
*Myoglobinuria, 659*  
*Metabolic Acidosis, 659*  
*Other Complications, 659*
- 26 The Child with a Musculoskeletal Alteration, 661  
 Review of the Musculoskeletal System, 661  
*Skeletal System, 661*  
*Articular System, 662*  
*Muscular System, 662*  
*Cartilage, 663*  
*Growth and Development, 663*  
*Diagnostic and Laboratory Tests, 663*
- Casts, Traction, and Other Immobilizing Devices, 666  
*Splints, 666*  
*Casts, 666*  
*Traction, 666*  
*External Fixation Devices, 668*  
*Nursing Considerations, 668*
- Fractures, 671  
*Etiology, 671*  
*Incidence, 671*  
*Manifestations, 674*  
*Therapeutic Management, 674*  
*Nursing Considerations, 674*
- Soft Tissue Injuries: Sprains, Strains, and Contusions, 675  
*Etiology, 675*  
*Incidence, 675*  
*Manifestations and Diagnostic Evaluation, 675*  
*Therapeutic Management, 675*  
*Nursing Considerations, 675*
- Osteomyelitis, 676  
*Etiology, 676*  
*Incidence, 676*  
*Manifestations, 676*  
*Diagnostic Evaluation, 676*  
*Therapeutic Management, 677*  
*Nursing Care of the Child with Osteomyelitis, 677*
- Scoliosis, 678  
*Adolescent Idiopathic Scoliosis (AIS), 678*
- Kyphosis, 681  
*Scheuermann's Kyphosis, 681*  
 Nursing Care Plan: The Adolescent Undergoing a Spinal Fusion, 681  
*Other Causes of Hyperkyphosis, 683*
- Limb Differences, 683  
*Etiology and Incidence, 683*  
*Diagnostic Evaluation, 683*  
*Therapeutic Management and Nursing Considerations, 683*
- Developmental Dysplasia of the Hip, 684  
*Etiology and Incidence, 685*  
*Manifestations, 685*  
*Diagnostic Evaluation, 685*  
*Therapeutic Management, 685*  
 Nursing Care of the Child with Developmental Dysplasia of the Hip, 687
- Legg-Calvé-Perthes Disease, 688  
*Etiology and Incidence, 688*  
*Manifestations, 689*  
*Diagnostic Evaluation, 689*  
*Therapeutic Management, 689*  
 Nursing Care of the Child with Legg-Calvé-Perthes Disease, 689
- Slipped Capital Femoral Epiphysis, 690  
*Etiology and Incidence, 690*  
*Pathophysiology, 690*  
*Manifestations and Diagnostic Evaluation, 690*  
*Therapeutic Management and Nursing Considerations, 690*
- Clubfoot, 690  
*Etiology and Incidence, 690*  
*Manifestations and Diagnostic Evaluation, 690*  
*Therapeutic Management, 690*  
*Ponseti Casting Method, 691*  
*Clubfoot Recurrence, 691*  
*Nursing Considerations, 691*
- Syndromes and Conditions with Associated Orthopedic Anomalies, 692
- Muscular Dystrophies, 692  
*Etiology, 692*  
*Incidence, 692*  
*Pathophysiology, 692*  
*Manifestations, 692*  
*Diagnostic Evaluation, 692*

- Therapeutic Management, 692
- Nursing Considerations, 692
- Juvenile Idiopathic Arthritis, 694
  - Etiology, 695
  - Incidence, 695
  - Manifestations, 695
  - Diagnostic Evaluation, 695
  - Therapeutic Management, 695
  - Nursing Care of the Child with Juvenile Idiopathic Arthritis, 696
- 27 The Child with an Endocrine or Metabolic Alteration, 700
  - Review of the Endocrine System, 700
  - Diagnostic Tests and Procedures, 702
  - Neonatal Hypoglycemia, 703
    - Etiology, 703
    - Incidence, 703
    - Manifestations, 703
    - Diagnostic Evaluation, 703
    - Therapeutic Management, 704
    - Nursing Considerations, 704
  - Neonatal Hypocalcemia, 704
  - Phenylketonuria, 704
    - Etiology, 704
    - Incidence, 704
    - Manifestations, 705
    - Diagnostic Evaluation, 705
    - Therapeutic Management, 705
    - Nursing Considerations, 705
  - Inborn Errors of Metabolism, 705
  - Congenital Adrenal Hyperplasia, 705
    - Etiology, 706
    - Manifestations, 706
    - Diagnostic Evaluation, 706
    - Therapeutic Management, 706
    - Nursing Considerations, 706
  - Congenital Hypothyroidism, 707
    - Etiology, 707
    - Incidence, 707
    - Manifestations, 707
    - Diagnostic Evaluation, 708
    - Therapeutic Management, 708
    - Nursing Care of the Child with Congenital Hypothyroidism, 708
  - Acquired Hypothyroidism, 709
    - Etiology, 709
    - Pathophysiology, 709
    - Manifestations, 709
    - Diagnostic Evaluation, 709
    - Therapeutic Management, 709
    - Nursing Care of the Child with Acquired Hypothyroidism, 709
  - Hypertthyroidism (Graves Disease), 710
    - Incidence, 710
    - Pathophysiology, 710
    - Manifestations, 710
    - Diagnostic Evaluation, 710
    - Therapeutic Management, 710
    - Nursing Care of the Child with Hypertthyroidism, 710
- Diabetes Insipidus, 711
  - Etiology, 711
  - Incidence, 711
  - Manifestations, 711
  - Diagnostic Evaluation, 711
  - Therapeutic Management, 712
  - Nursing Considerations, 713
- Syndrome of Inappropriate Antidiuretic Hormone, 713
  - Etiology, 713
  - Manifestations, 713
  - Diagnostic Evaluation, 713
  - Therapeutic Management, 713
  - Nursing Considerations, 713
- Precocious Puberty, 714
  - Etiology, 714
  - Incidence, 714
  - Manifestations, 714
  - Diagnostic Evaluation, 714
  - Therapeutic Management, 714
  - Nursing Care of the Child with Precocious Puberty, 715
- Growth Hormone Deficiency, 716
  - Etiology, 716
  - Incidence, 716
  - Manifestations, 716
  - Diagnostic Evaluation, 717
  - Therapeutic Management, 717
  - Nursing Care of the Child with Growth Hormone Deficiency, 717
- Diabetes Mellitus, 718
  - Type 1 Diabetes Mellitus, 718
    - Etiology, 718
    - Incidence, 718
    - Manifestations, 718
    - Diagnostic Evaluation, 718
    - Therapeutic Management, 718
  - Nursing Care Plan: The Child with Type 1 Diabetes Mellitus in the Community Setting, 724
- Diabetic Ketoacidosis, 728
  - Etiology, 728
  - Manifestations, 728
  - Diagnostic Evaluation, 728
  - Therapeutic Management, 728
  - Nursing Care Plan: The Child in Diabetic Ketoacidosis (DKA), 728
- Long-Term Health Care Needs for the Child with Type 1 Diabetes Mellitus, 729
- Type 2 Diabetes Mellitus, 730
  - Etiology, 730
  - Manifestations, 730
  - Diagnostic Evaluation, 730
  - Therapeutic Management, 730
  - Nursing Care of the Child with Type 2 Diabetes Mellitus, 730



- Incidence, 730
- Manifestations, 730
- Diagnostic Evaluation, 730
- Therapeutic Management, 730
- 28 The Child with a Neurologic Alteration, 733
  - Review of the Central Nervous System, 733
    - Embryologic Development, 733
    - The Myelin Sheath, 733
    - The Neural System, 733
    - The Axial Skeleton, 734
    - The Meninges, 735
    - The Brain, 735
    - The Cranial Nerves, 735
    - The Spinal Cord, 735
    - Cerebrospinal Fluid, 735
    - Cerebral Blood Flow and Intracranial Regulation, 735
  - Increased Intracranial Pressure, 737
    - Etiology, 737
  - Nursing Care Plan: The Child with a Neurologic System Disorder, 738
    - Manifestations, 740
    - Diagnostic Evaluation and Therapeutic Management, 742
  - Spina Bifida, 742
    - Etiology and Incidence, 742
    - Manifestations, 742
    - Diagnostic Evaluation, 744
    - Therapeutic Management, 744
  - Hydrocephalus, 744
    - Etiology, 744
    - Incidence, 745
    - Manifestations and Diagnostic Evaluation, 745
    - Therapeutic Management, 745
  - Cerebral Palsy, 746
    - Etiology and Incidence, 746
    - Manifestations, 746
    - Diagnostic Evaluation and Therapeutic Management, 747
  - Head Injury, 747
    - Types of Head Injuries, 747
  - Nursing Care Plan: The Child with Cerebral Palsy in the Community Setting, 748
    - Incidence, 749
    - Manifestations, 749
    - Diagnostic Evaluation, 749
    - Therapeutic Management, 750
    - Nursing Considerations, 750
  - Spinal Cord Injury, 751
    - Etiology, 751
    - Incidence, 751
    - Manifestations, 751
    - Diagnostic Evaluation, 752
    - Therapeutic Management, 752
  - Nursing Care of the Child with a Spinal Cord Injury, 752
- Seizure Disorders, 754
  - Etiology, 754
  - Incidence, 754
  - Pathophysiology, 754
  - Manifestations, 754
  - Diagnostic Evaluation, 754
  - Therapeutic Management, 755
- Status Epilepticus, 756
  - Etiology, 756
  - Incidence, 756
  - Nursing Care Plan: The Child with a Seizure Disorder in a Community Setting, 757
    - Pathophysiology, 759
    - Manifestations, 759
    - Diagnostic Evaluation, 759
    - Therapeutic Management, 759
    - Nursing Care of the Child with Status Epilepticus, 759
- Meningitis, 759
  - Etiology, 760
  - Incidence, 760
  - Manifestations, 760
  - Diagnostic Evaluation, 760
  - Therapeutic Management, 760
  - Nursing Care of the Child with Meningitis, 761
- Guillain-Barré Syndrome, 762
  - Incidence, 762
  - Pathophysiology, 762
  - Manifestations, 762
  - Diagnostic Evaluation, 762
  - Therapeutic Management, 762
  - Nursing Care of the Child with Guillain-Barré Syndrome, 763
- Neurologic Conditions Requiring Critical Care, 764
- Headaches, 764
  - Etiology, 764
  - Incidence, 764
  - Manifestations, 764
  - Diagnostic Evaluation, 764
  - Nursing Care of the Child with Headaches, 764
- 29 Psychosocial Problems in Children and Families, 769
  - Overview of Psychosocial Disorders of Childhood, 769
    - Precipitating Factors, 770
    - Diagnostic Evaluation, 770
  - Emotional Disorders, 771
    - Anxiety Disorders, 771
    - Mood Disorders, 773
    - Etiology and Physiology of Emotional Disorders, 774

- Therapeutic Management of Children with Emotional Disorders, 774*  
*Nursing Care of the Child with an Emotional Disorder, 775*
- Suicide, 776**  
*Manifestations and Risk Factors, 776*  
*Therapeutic Management, 777*  
*Nursing Care of the Child or Adolescent At Risk for Suicide, 777*
- Behavioral Disorders, 778**  
*Etiology, 778*  
*Manifestations, 779*  
*Diagnostic Evaluation, 779*  
*Therapeutic Management, 779*  
*Nursing Care of the Child with Attention Deficit-Hyperactivity Disorder, 779*
- Eating Disorders: Anorexia Nervosa and Bulimia Nervosa, 780**  
*Etiology, 781*  
*Manifestations, 781*  
*Diagnostic Evaluation, 781*  
*Therapeutic Management, 781*  
*Nursing Care of the Child or Adolescent with an Eating Disorder, 782*
- Substance Abuse, 783**  
*Etiology, 785*  
*Manifestations, 785*  
*Therapeutic Management, 785*  
*Nursing Care of the Child or Adolescent with a Substance Disorder, 785*
- Infant with Neonatal Abstinence Syndrome, 786**  
*Incidence, 786*  
*Manifestations, 786*  
*Diagnostic Evaluation, 786*  
*Therapeutic Management, 786*  
*Nursing Considerations, 787*
- Childhood Physical and Emotional Abuse and Child Neglect, 787**  
*Etiology, 787*  
*Incidence, 787*  
*Manifestations, 787*  
*Nursing Care Plan: The Abused Child, 790*
- 30 The Child with a Developmental Disability, 795**  
*Genetics and Genomics, 795*  
**Intellectual and Developmental Disorders, 797**  
*Developmental Disability and the Americans with Disabilities Act: The Impact of Public Policy, 797*  
*Terminology, 798*  
*Etiology of Intellectual Disabilities and Pervasive Developmental Disorders, 799*  
*Incidence of Intellectual and Developmental Disorders, 799*  
*Manifestations, 799*  
*Diagnostic Evaluation, 801*  
*Management, 801*
- Nursing Care Plan: The Child with a Developmental Disorder or Disability in the Community Setting, 802*
- DISORDERS RESULTING IN INTELLECTUAL OR DEVELOPMENTAL DISABILITY, 803**  
**Down Syndrome, 803**  
*Etiology, 804*  
*Incidence, 804*  
*Manifestations, 805*  
*Diagnostic Evaluation, 806*  
*Therapeutic Management, 806*  
*Nursing Care of the Child with Down Syndrome, 806*
- Fragile X Syndrome, 807**  
*Etiology, 807*  
*Incidence, 807*  
*Manifestations, 807*  
*Diagnostic Evaluation, 808*  
*Therapeutic Management, 808*  
*Nursing Considerations, 808*
- Rett Syndrome, 808**
- Fetal Alcohol Spectrum Disorder, 809**  
*Etiology and Incidence, 809*  
*Manifestations, 809*  
*Diagnostic Evaluation, 809*  
*Nursing Care of the Infant with Fetal Alcohol Syndrome, 809*
- Nonorganic Failure to Thrive, 810**  
*Etiology, 810*  
*Incidence, 810*  
*Manifestations and Risk Factors, 810*  
*Diagnostic Evaluation, 810*  
*Therapeutic Management, 810*  
*Nursing Considerations, 811*
- Autism Spectrum Disorders, 811**  
**Asperger Syndrome, 811**  
*Autism, 811*  
*Incidence, 812*  
*Manifestations, 812*  
*Diagnostic Evaluation, 813*  
*Therapeutic Management, 813*  
*Nursing Care of the Child with Autism, 813*
- 31 The Child with a Sensory Alteration, 816**  
**Review of the Eye, 816**  
*Structure and Function, 816*  
*Neonatal Development, 816*  
**Review of the Ear, 816**  
*Structure and Function, 816*  
*Neonatal Development, 817*  
**Speech Development, 817**  
**Disorders of the Eye, 818**  
*Nursing Considerations for the Child with Color Deficiency, 818*

- Nursing Considerations for the Child with a Blocked Lacrimal Duct*, 819
- Nursing Considerations for the Child with a Refractive Error*, 819
- Nursing Considerations for the Child with Amblyopia*, 820
- Nursing Considerations for the Child with Strabismus*, 820
- Nursing Considerations for the Child with Glaucoma*, 821
- Nursing Considerations for the Child with a Cataract*, 822
- Nursing Care Plan: The Child Having Eye Surgery, 822
- Eye Surgery, 824
- Eye Infections, 824
- Nursing Considerations for the Child with Conjunctivitis*, 824
- Nursing Considerations for the Child with Orbital Cellulitis*, 824
- Nursing Considerations for the Child with a Corneal Ulcer*, 825
- Eye Trauma, 825
- Nursing Considerations for the Child with a Corneal Abrasion*, 825
- Nursing Considerations for the Child with Hemorrhage*, 825
- Nursing Considerations for the Child with Hyphema*, 825
- Nursing Considerations for the Child with a Chemical Splash Injury*, 826
- Hearing Loss in Children, 826
- Etiology, 826
- Incidence, 826
- Diagnostic Evaluation, 827
- Therapeutic Management, 828
- Nursing Considerations for the Child with Hearing Loss*, 828
- Language Disorders, 829
- Glossary, 831
- Index, 837